

DA & MBG
ARCHITECTS



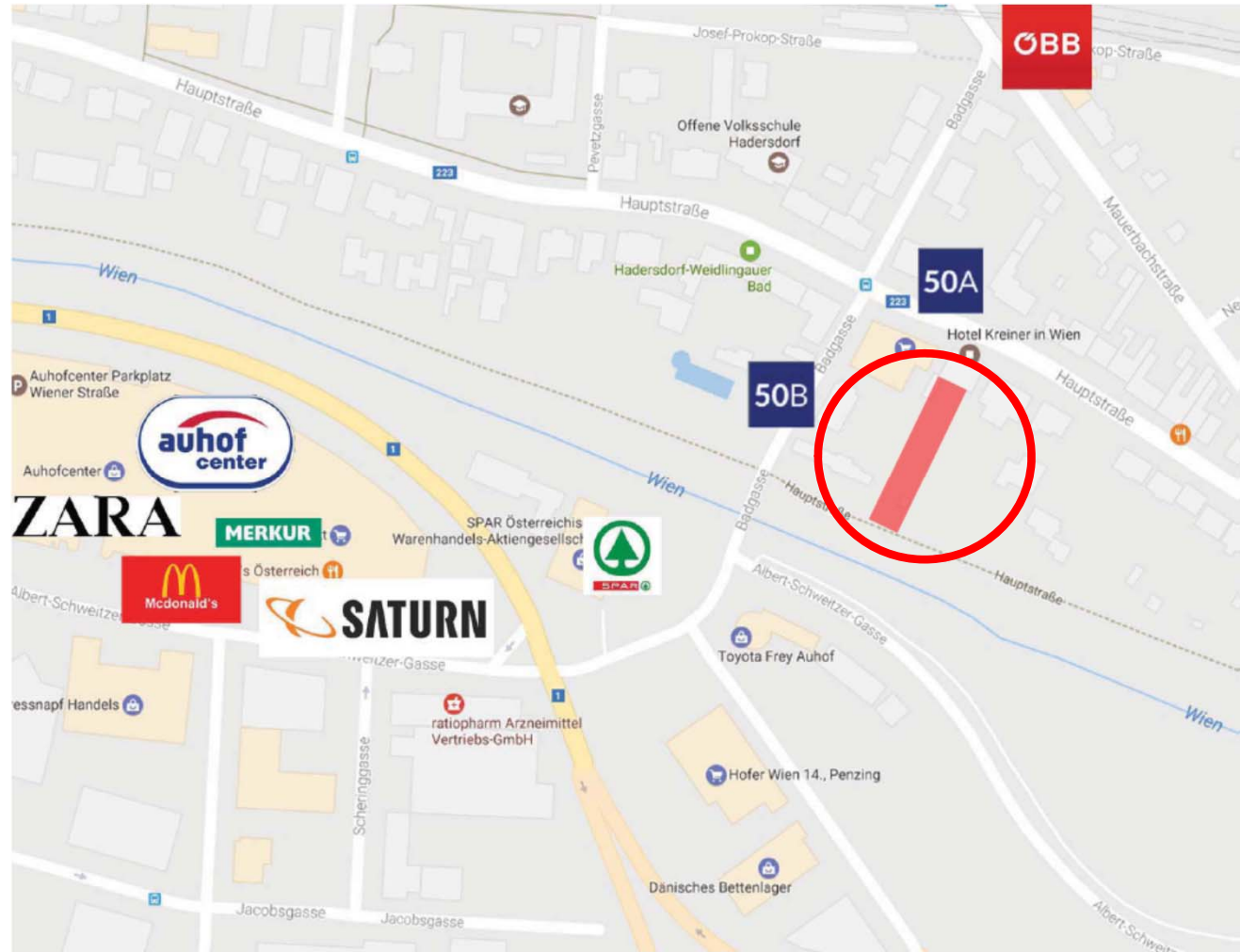
HAUPTSTRASSE 31

WOHNEN IM
GRÜNEN

HAUS B

NEUBAU
DOPPELHAUS
IN
1140 WIEN

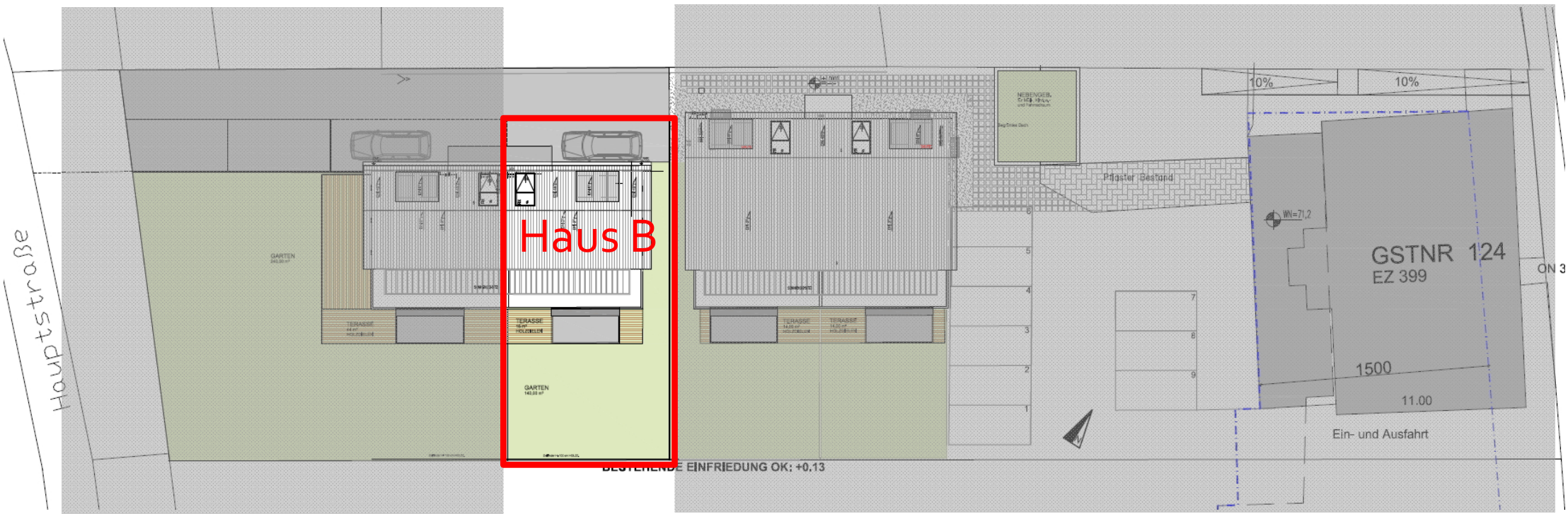
LAGE

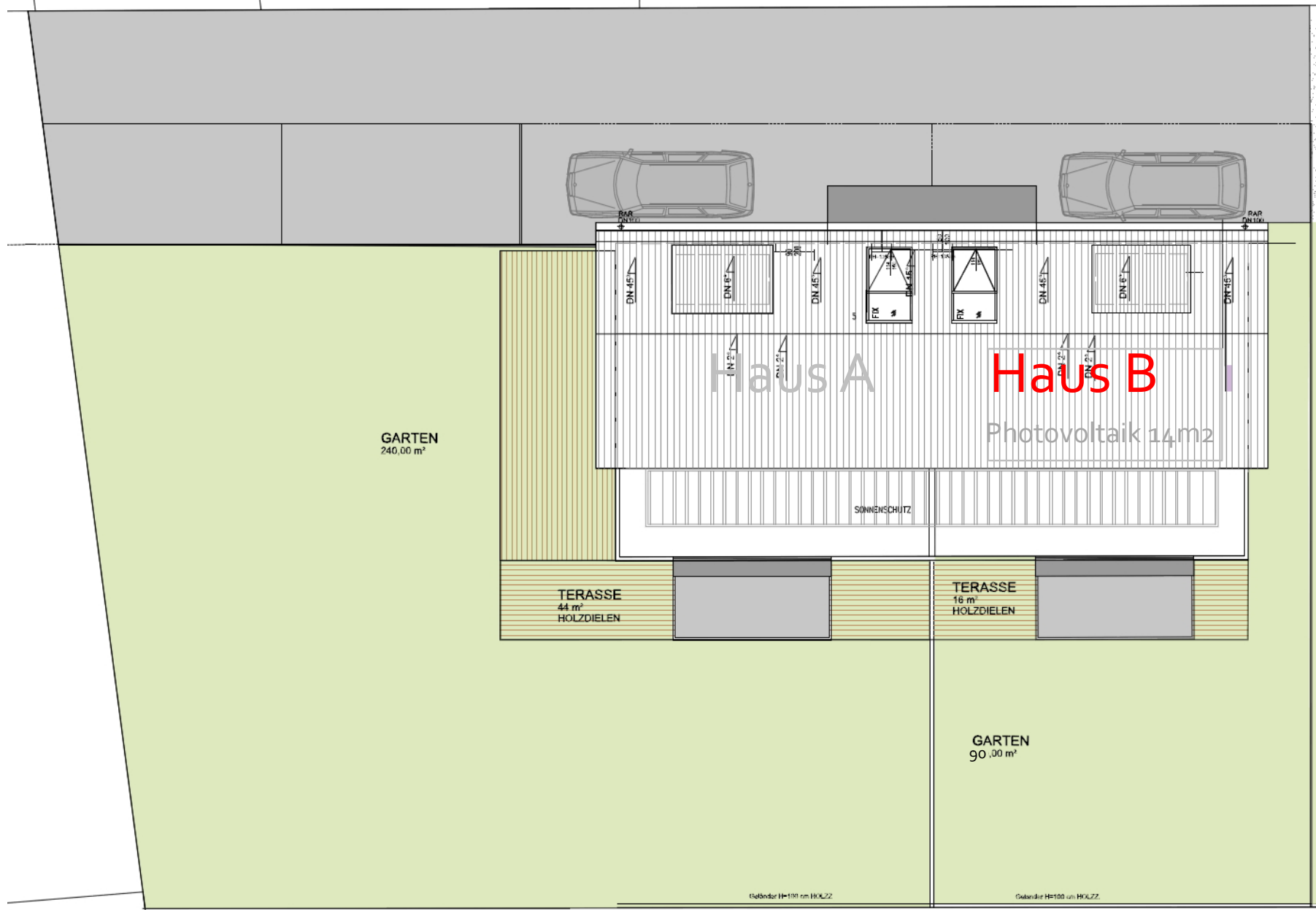


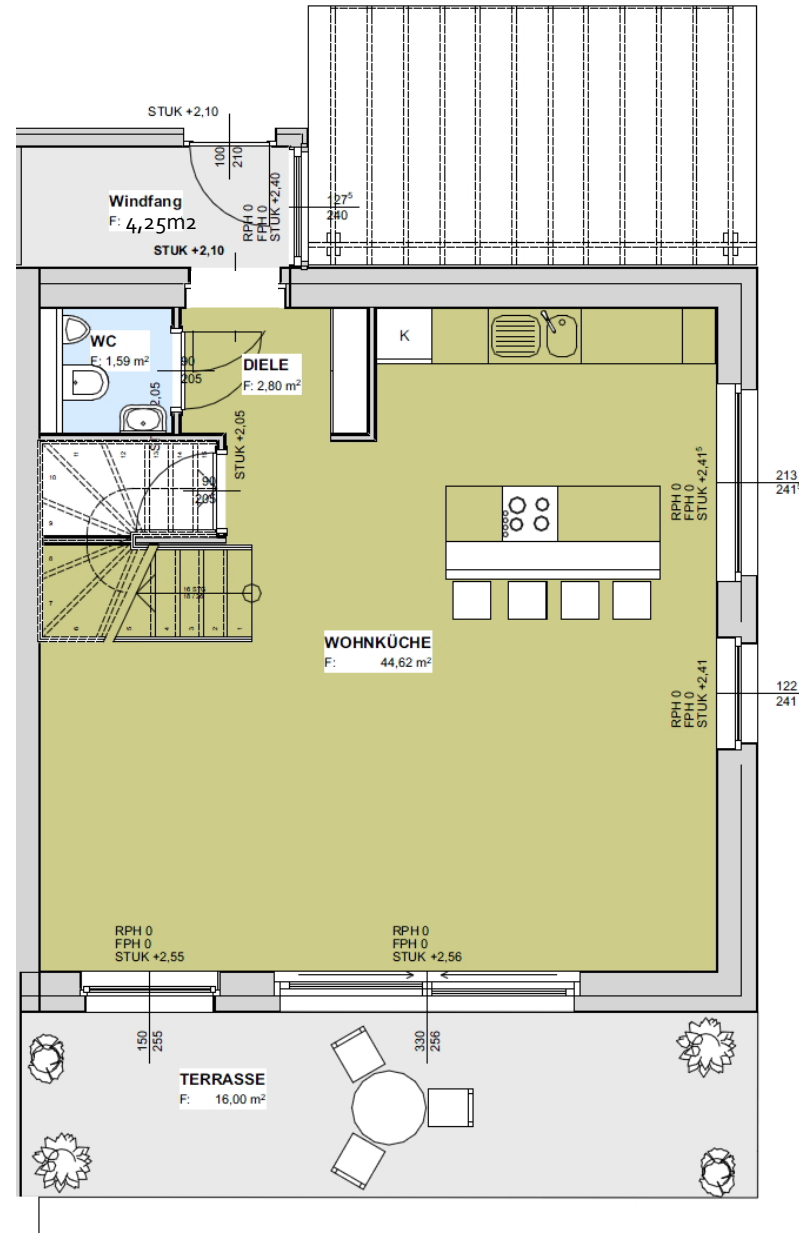
UMGEBUNG

Die Nähe zum Auhof Center, die schnelle Anbindung zum Westautoban und Schnellbahn sowie die vielfältige Infrastruktur machen den 14. Wiener Gemeindebezirk zu einem aufstrebenden und immer begerteren Wohnbezirke.







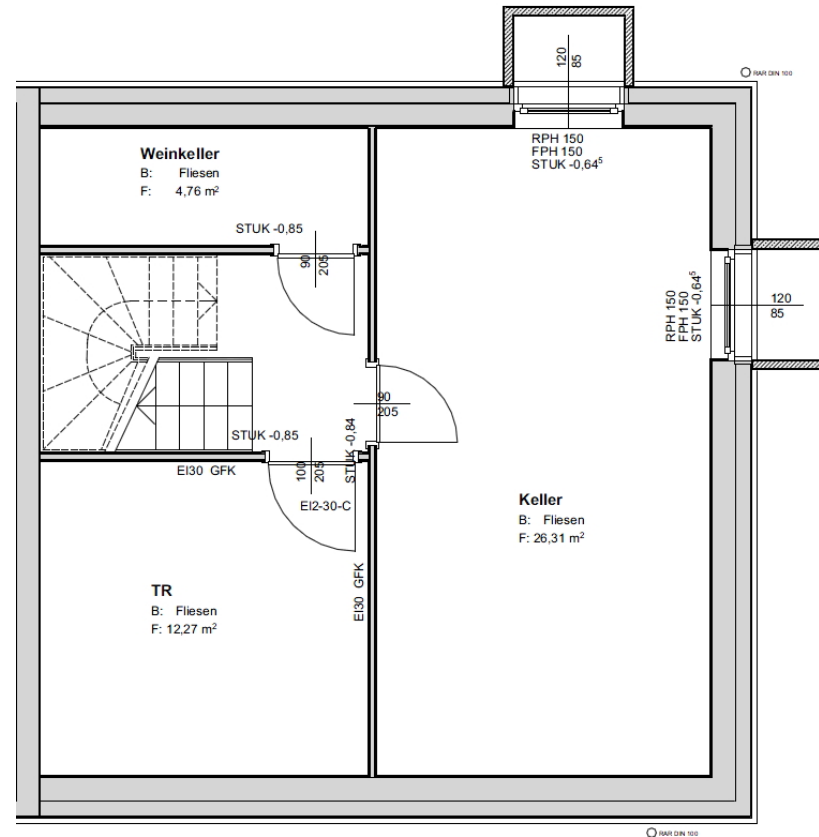


WNFL = 53,26 m²

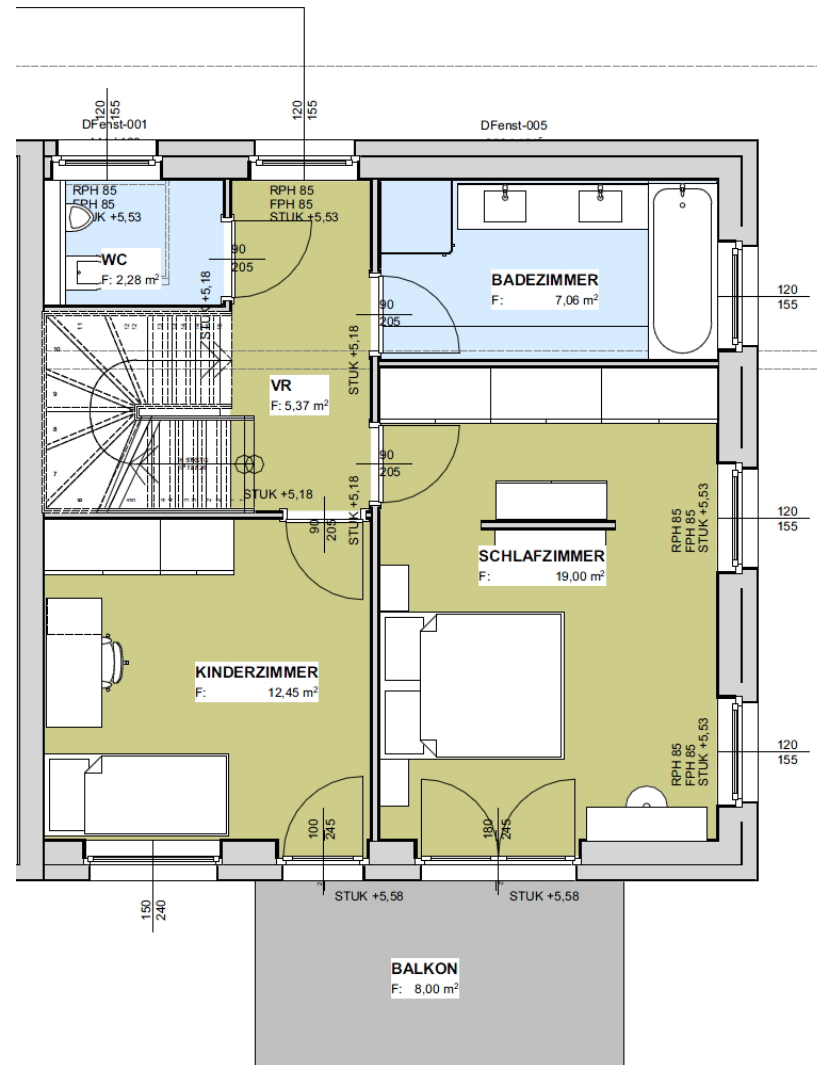
TERRASSE = 16,00 m²

VORPLATZ = 26,50 m²

GARTEN = 90 m²

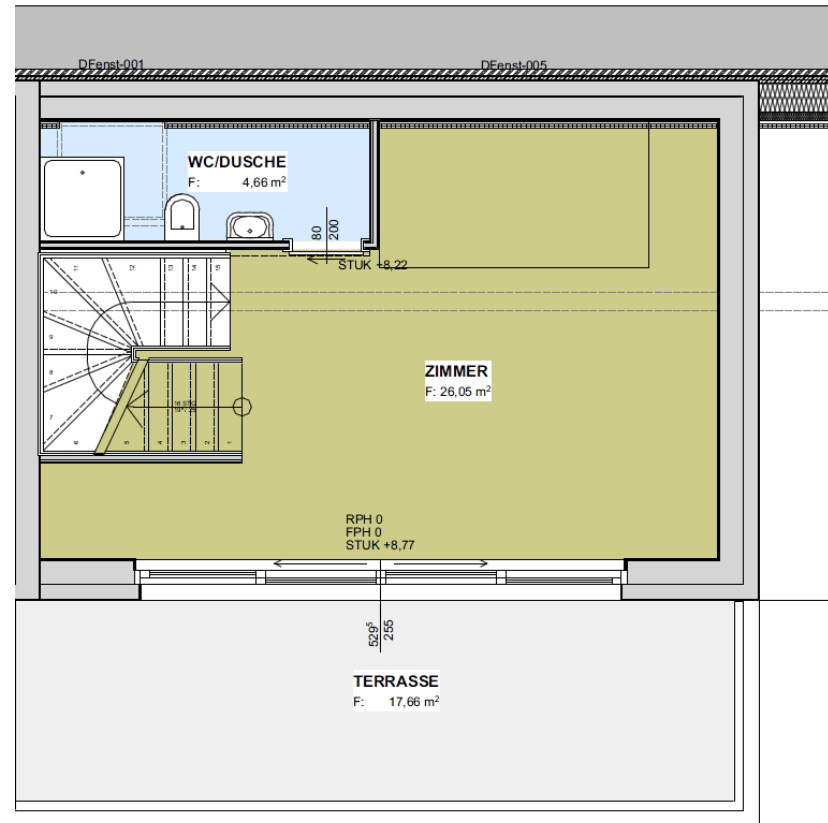


NFL = 48,45 m²



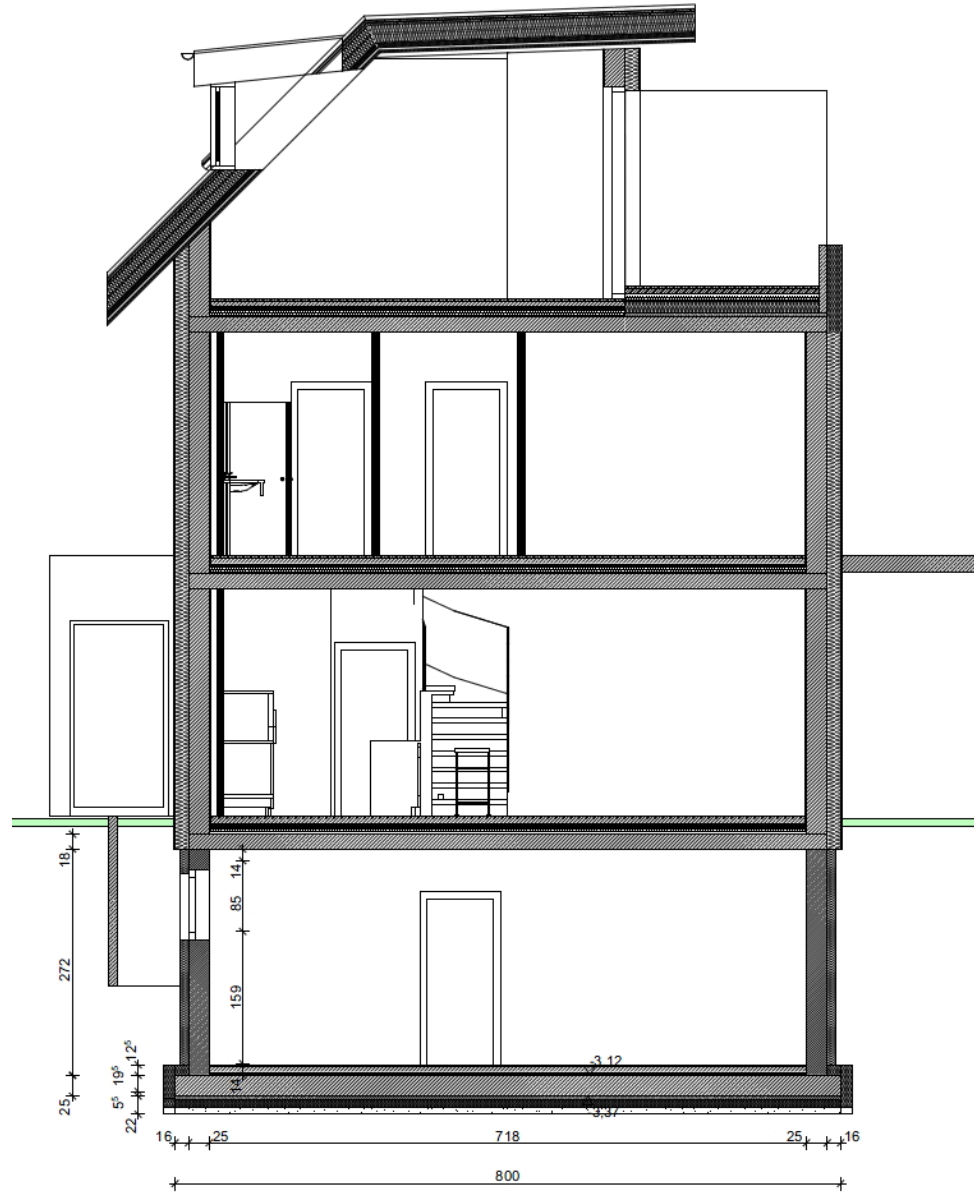
WNFL = 46,14 m²

BALKON = 8,00 m²



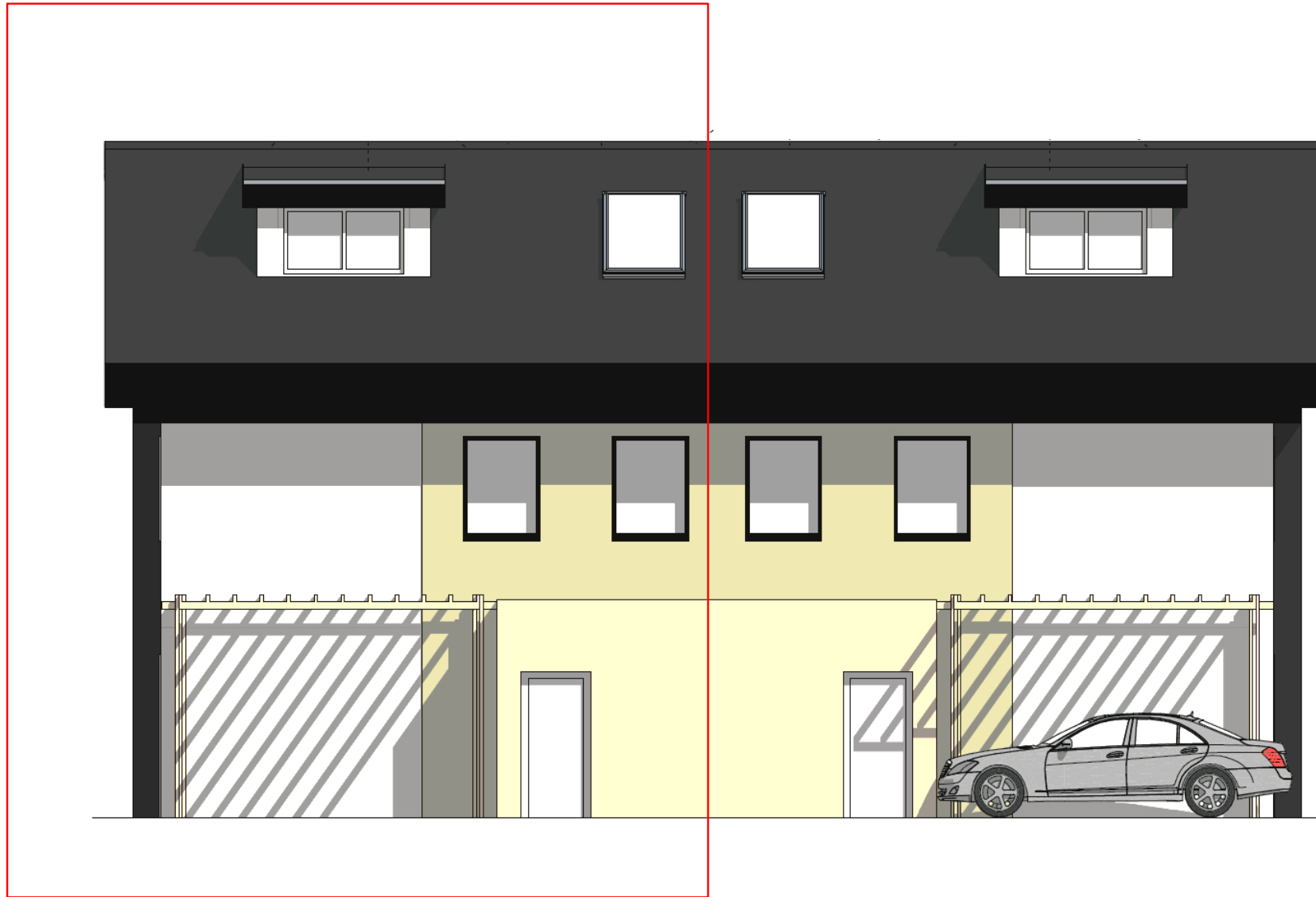
WNFL = 30,51 m²

TERRASSE = 17,66 m²









GRUNDSTÜCK=	197	m ²
EG WNFL =	53,26	m ²
OG WNFL =	46,11	m ²
DG WNFL =	30,51	m ²
KELLER =	48,45	m ²
WINDFANG =	4,25	m ²
TERRASSE =	33,66	m ²
BALKON =	8,00	m ²
VORPLATZ =	26,50	m ²
SUMME WNFL =	129,88	m²
SUMME NFL=	174,08	m ²
GARTEN =	90,0	m ²













